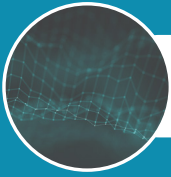


Advanced Theology & Leadership Programme (ATL202)

If you are motivated to study and apply the bible, theology, spirituality and Christian leadership in your life and ministry at an advanced level, this programme will be of great interest and benefit to you.

Besides covering all that is offered in our one-year programme, you will focus on:

- The biblical story in terms of a wholistic narrative
- A practical approach to the relevance of Kingdom Theology found in the Old Testament and the life and ministry of Jesus.
- Developing a practical working knowledge of living out your new nature in Christ in thought, word and deed under the guidance of the Apostle Paul.
- Enrich your faith in Jesus through study and reflection on the latest historical Jesus research.
- Mastering a deeper understanding of the models, skills, styles, and processes of biblical leadership.
- Training to expound the scriptures intelligently and accurately by means of the fundamental rules of interpretation and excellent online tools and resources.



BIBLICAL OVERVIEW

Course Description

This course serves as an introduction to biblical theology. We all live out of a story that provides a context for understanding the meaning of history, a story which gives shape and direction to our lives. In this course, our students come to understand that the Bible offers such a story: it is God's story, the true story of the world. They also learn to articulate a comprehensive biblical worldview by systematically developing the most wide-ranging categories of the Bible's story line: creation, sin, and redemption. Emphasis is also given to the believer's own place within the biblical story and the centrality of mission.

Course Outcomes

- *Explain the biblical metanarrative of redemption as narrated in Scripture.*
- *Comprehend the major themes and images of the biblical story, such as creation, fall, redemption, kingdom of God, covenant, and mission.*
- *Understand an overview of the Bible using the metaphor of a multiple 'Act' Drama.*
- *Explain the authority of the biblical story for cultural and academic activity.*
- *Equip others with a deeper awareness of, and sensitivity towards, the biblical story and our place in that story.*



THEOLOGY OF THE KINGDOM

Course Description

This course introduces the student to the theology of the kingdom of God in scripture. Taking recent (latter 20th Century onwards) Jesus Research as its starting point, it covers the growing expectation of the kingdom in Old Testament literature and then examines the coming of the kingdom in the life and ministry of Jesus, particularly in the Synoptic Gospels and Acts. From there it defines the kingdom as enacted, inaugurated eschatology. Having established that definition it then explores the kingdom in the Christian life, particularly through Pauline theology. It also examines the mandate for kingdom ministry today as modelled on the ministry of Jesus. A final section deals with various implications of kingdom theology, in terms of the church, dispensationalism, cessationism, healing, and the place of Israel. It equips our students with a thorough knowledge of the biblical theology of the kingdom of God and how this theology is positioned in relation to other theologies, which it either redefines or opposes.

Course Outcomes

- *Describe the mission and message of Jesus.*
- *Model Jesus ministry to the world today.*
- *Elaborate on the three growing windows of Old Testament kingdom expectation.*
- *Discuss the "coming of the kingdom in the mission and ministry of Jesus" as enacted, inaugurated eschatology.*
- *Explain how the events of the cross, resurrection and ascension serve as supreme moments of enacted, inaugurated eschatology.*
- *Explain the outworking of the kingdom in the Christian life, as understood through Pauline theology.*
- *Justify that the Christian disciple is both called and authorized to inaugurate the kingdom as Jesus did.*
- *Analyse the difference between kingdom theology and various popular opposing theologies.*



DEMONSTRATING THE KINGDOM

Course Description

This course focuses on the coming of the kingdom by the presence and power of the Holy Spirit, through the distribution and impartation of charismatic gifts, particularly those gifts that enable mission and evangelism. Its purpose is to build faith and expectation in our students, disciples of Jesus, to receive the empowering of the Spirit for witness, leading to a radical obedience to his commission, through revelatory/prophetic gifts, gifts of healing and deliverance, all combining to effect power evangelism. A key step in the equipping process is to lay a strong foundation in Christian identity.

Course Outcomes

- Describe the mission and message of Jesus.
- Model Jesus ministry to the world today.
- Elaborate on the three growing windows of Old Testament kingdom expectation.
- Discuss the “coming of the kingdom in the mission and ministry of Jesus” as enacted, inaugurated eschatology.
- Explain how the events of the cross, resurrection and ascension serve as supreme moments of enacted, inaugurated eschatology.
- Explain the outworking of the kingdom in the Christian life, as understood through Pauline theology.
- Justify that the Christian disciple is both called and authorized to inaugurate the kingdom as Jesus did.
- Analyse the difference between kingdom theology and various popular opposing theologies.



JESUS & APPRENTICESHIP IN THE GOSPELS

Course Description

This course focuses on “Christian spirituality” and specifically Jesus’ understanding of it portrayed through the Gospels as “becoming his lifelong apprentice” (disciple). It is a storied, theological and practical course for spiritual growth. Its aim is to help our students to understand and practise spirituality as Jesus did: to be captivated by him and his spirituality, to walk in his way and become like him, following him in his kingdom. Why Jesus? Because we believe he was both human and divine: he modelled what it means to be truly human as God’s image, and he was God incarnate, revealing God to us. Jesus is indeed The Way to God.

Course Outcomes

- Understand several interpretations of ‘spirituality’, the New Testament meaning of ‘disciple’, and the process of becoming a mature disciple of Christ.
- Practice several spiritual disciplines of engagement.
- Grasp the biblical understanding of the kingdom of God and its key missional implications.
- Identify the fundamental influencers of Jesus’ spiritual formation and apply them to your life.
- Examine the meaning and mandate of the Great Commission of Kingdom Apprenticeship.
- Explore Jesus’ sense of identity, empowerment for mission/ministry and confrontation with evil, together with the relevance and application of each for your life.
- Apply Jesus’ call to discipleship in the kingdom community and his interpretation of the “good life” to yourself.
- Discover the significance of Jesus’ version of the Great Commandment and Apostle John’s spirituality of love.
- Investigate the nature and implications of the Sermon on the Mount for apprenticeship.



PAUL & TRANSFORMATION

Course Description

This is the second course which focuses on “Christian spirituality” and covers Paul the Apostle and his understanding of progressive transformation toward Christlikeness. Paul’s focus in being a “Christ-follower” is our personal union with Jesus, in what He has done for us in salvation, and in our responsive participation in that new creation reality. Therefore, the primary aim of this course is to develop in our students a practical working knowledge of what this means - how to live out one’s new nature in Christ in thought, word and deed. The course also explores aspects of how Spirituality has developed in Christian tradition over the ages.

Course Outcomes

- *Understand Christian spirituality in its primary forms and expressions through the lens of different types of prayer.*
- *Grasp Paul’s view of the nature and growth of salvation, God’s Spirit-Life in us, which saves and transforms us to Christ’s likeness in this evil age and into eternity.*
- *Interpret Paul and his writings through the lens of Jesus’ messianic Judaism.*
- *Express Paul’s reimagined Jewish eschatology and how it redefined God’s true nature, and his one true people and their mission, in light of Jesus and the Spirit.*
- *Explain the nature of the classic spiritual path in Christian tradition using the stages of purification of the body/soul, illumination of the mind/intellect, and union of heart/spirit with God.*
- *Comprehend the nature of spiritual transformation (sanctification) in practice, that is the manner in which God forms and transforms us toward Christ-like-ness.*
- *Practice several spiritual disciplines of abstinence.*
- *Integrate personally appropriate practices into living a balanced, vibrant spiritual life.*



THE HISTORICAL JESUS

Course Description

This course intends to help Christians to see Jesus more clearly. This is of great significance because “The way Christians see Jesus determines the way they see God, salvation, the Christian life, mission and society. Therefore, any major rediscovery of Jesus and the kingdom has huge consequences for us. It becomes the unifying story of the whole of scripture, which if believed and received becomes the controlling narrative that shapes our entire worldview, giving meaning to all of reality and the whole of life.” - N.T. Wright

Course Outcomes

- *Explain the important aspects of ‘The Historical Jesus’ studies’ (Jesus Research) at a rudimentary level.*
- *Identify and comprehend leading scholars’ literature in the field of historical biblical study.*
- *Apply their knowledge of Jesus and his Kingdom mission within the context of Second Temple Judaism, in a fresh and meaningful way.*
- *Examine their present biblical and theological beliefs, and their spirituality, through the lens of the latest Jesus research.*
- *Appreciate an overview life-portrait of Jesus.*
- *Identify with Jesus of Nazareth at a deeper level and follow him more passionately and intelligently.*



BIBLICAL LEADERSHIP

Course Description

We have become bankrupt in the spirituality of leadership, in the true spirit and character of authentic leadership. That is why things are largely the way they are in our world. This course addresses this and other issues in leadership, for the sake of our integrity as leaders, and the sake of our world. It is centred in Kingdom leadership and seeks to equip students with the key spiritual dynamic of the motivation and mode of leadership – based on the teachings and models of biblical leadership – character-based, selfless-serving, and effective leadership. The final section of this course will focus on the functional aspects of leadership – skill, style and process. Significant emphasis is given to contextually applying the knowledge presented in this course.

Course Learning Outcomes

As a result of successful completion, the student will be able to:

- *Explain the notion of leadership: what it is, its general qualities and those that are common to Christian usage of the idea of leadership.*
- *Present a Biblical and contextual study of the spiritual gift of leadership, its application and its implications for missionality.*
- *Unpack the essentials of “kingdom leadership”, or leadership as it should be given in the context of the Church.*
- *Explain and critique a variety of leadership models and styles.*
- *Apply their knowledge of leadership dynamically and effectively within their context.*



BIBLICAL INTERPRETATION

Course Description

This course seeks to equip students to read the scriptures intelligently with the fundamental hermeneutical skills, or rules of interpretation that have become standard operating procedures within the historic, evangelical faith. A large part of the course deals with interpreting biblical texts in context, within the many layers of context that apply. It also deals with Rabbinical approaches to the Old Testament current within Second Temple Judaism and how Jesus was influenced by this, but also had a unique way of reading the Old Testament. It shows how his hermeneutic then influenced the writers of the New Testament. It also explores charismatic approaches to the text, and balances them with historic, ecumenical truth. Lastly, it will take the students a step further by empowering them to use their hermeneutical skills, together with excellent online tools/resources, to interpret a variety of scriptural genres.

Course Outcomes

- *Understand how the act of interpretation is placed in a relational model, showing that humans are always engaging in interpretation, often unconsciously.*
- *Explain the standard, historic principles and rules of interpreting scripture, normally found within the great tradition of the Reformers and the leaders of evangelical movements since then.*
- *Interpret a wide variety of biblical texts of differing genres in context.*
- *Comprehend the relationship between the Old Testament and the New Testament within sound hermeneutical principles.*
- *Explain the Rabbinical approaches current during the New Testament era, the unique way Jesus read and interpreted the Old Testament, and how this influenced the Christian movement and its writers.*
- *Balance the revelatory experiences of the Holy Spirit, or charismatic approaches to interpretation, with a commitment to the “rule of faith”, or ecumenical Christian tradition and its historic rules of interpretation.*

2022 TERMS & COURSES

REGISTRATION WEEK	TERM	17 - 31 JANUARY	
<i>First year: Biblical Overview</i>	1	31 Jan - 11 April	10 weeks
<i>Second year: Paul & Transformation in the NT Letters & Church Tradition</i>			
HOLIDAYS		12 - 24 April	2 weeks
REGISTRATION WEEK		12 - 24 April	
<i>First year: Theology of the Kingdom</i>	2	25 April - 4 July	10 weeks
<i>Second year: Biblical Leadership</i>			
HOLIDAYS		5 July- 18 July	2 weeks
REGISTRATION WEEK		5 July- 18 July	
<i>First year: Demonstrating the Kingdom</i>	3	19 July - 26 Sept	10 weeks
<i>Second year: The Historical Jesus</i>			
HOLIDAYS		27 Sep - 2 Oct	1 week
REGISTRATION WEEK		19 Sep - 2 Oct	
<i>First year: Jesus & Apprenticeship in the Gospels</i>	4	3 Oct - 12 Dec	11 weeks
<i>Second year: Biblical Interpretation</i>			

REQUIRED BOOKS

All of our books are available in either Paperback or Kindle formats. Please note that:

1. Paperback versions should be ordered at least **3 weeks** before the beginning of a term to allow time for delivery.
2. Kindle versions are usually cheaper and available immediately following purchase through Amazon.com. As a result, we highly recommend utilizing Kindle as your preferred format.

COURSE	REQUIRED TEXTBOOK
BIBLICAL OVERVIEW	<i>Bartholomew, Craig, and Michael Goheen. The Drama of Scripture: Finding Our Place in the Biblical Story. 2nd ed. 2014 Publishers include: 1. SPCK (cheaper) OR 2. Baker Academic</i>
THEOLOGY OF THE KINGDOM	<i>Morphew, Derek. Breakthrough: Discovering the Kingdom. 5th Edition. Vineyard International Publishing, 2019.</i>
JESUS & APPRENTICESHIP IN THE GOSPELS	<i>Venter, Alexander. Doing Spirituality: The Journey of Character Formation Towards Christlikeness. Vineyard International Publishing, 2019.</i>
PAUL & TRANSFORMATION IN THE EPISTLES	<i>Venter, Alexander. Doing Spirituality: The Journey of Character Formation Towards Christlikeness. Vineyard International Publishing, 2019.</i>
DEMONSTRATING THE KINGDOM	<i>Morphew, Derek. Demonstrating the Kingdom. Vineyard International Publishing, 2019.</i>
BIBLICAL LEADERSHIP	<i>Mitchell, Costa. Giving Leadership. Vineyard International Publishing, 2017.</i>
THE HISTORICAL JESUS	<i>Wright, N.T. The Challenge of Jesus: Rediscovering Who Jesus Was and Is. IVP Books.</i>
BIBLICAL INTERPRETATION	<p><i>Morphew, Derek. Biblical Interpretation 101: Historic Rules for Reading the Bible. Vineyard International Publishing, 2012.</i></p> <p>AND</p> <p><i>Fee, D., Gordon & Stuart, Douglas. How to Read the Bible for All Its Worth. 2Ed. Zondervan Publishing, 2003. Provided by SOL as a PDF.</i></p>

THEOLOGY & LEADERSHIP

(pls note L101 is a 1 year certificate)

Fee Breakdown

- Deposit – R900
- Fees – R9900
- Total – R10800 (over 12 months)

Payment Options

- Annual – R10500 (save R300)
- Quarterly – R2700
- Monthly – R900 per month x 11 Months

ADVANCED THEOLOGY & LEADERSHIP

(pls note ALC is a 2 year certificate)

Fee Breakdown

- Deposit – R900
- Fees – R20 700
- Total - R21600 (over 24 months)

Payment Options

- Annual – R10500 (save R300)
- Quarterly – R2700
- Monthly – R900 per month x 23 Months

Terms and Conditions

The School of Leadership makes use of an online subscription service to ensure that the payment process is seamless and simplified.

It requires card payments via VISA or MASTERCARD and subscriptions are paid on the final day of each month.

Your registration and first month's subscription is R950,00 and R900,00 respectively. (via a bank card). Subsequent subscription payments of R900 will be automatically deducted from your card on the same date each month as your first payment and will continue for the remaining 11 or 23 months (subject to the programme of choice).